

Thank you for requesting directions, travel information, hotel information and/or parking information. We here at the **Robert Reeder Simulation & Education Center** at **Crozer Health** look forward to meeting you for class soon!

You have signed up to take one of many courses that are offered under the umbrellas of the Simulation Center, the Advanced Trauma Life Support (ATLS) Site, the American Heart Association (AHA) Training Center, or the Emergency Medical Training institute (EMSTI). All of these are sections of the **Robert Reeder Simulation & Education Center** located within **Crozer Chester Medical Center**.

Our Address

Crozer Chester Medical Center
1 Medical Center Blvd
Simulation Center - 1st Floor, East Wing
Upland, PA 19013

When you put the address to Crozer Hospital/CCMC into your GPS, you will end up on **Upland Avenue** and at some point, you will come across the **intersection of Upland Avenue and Seminary Avenue**. Notice the obviously marked hospital ambulance bays on one side of the street and the Crozer sign surrounded by flowers directly across the street from the ambulance bays. Once at this intersection, you will want to turn onto Seminary Ave and continue driving straight on Seminary Ave past the ambulance bays (seen the picture below).



Keep driving straight on Seminary Ave until you arrive at the location/stop sign seen the next picture below).

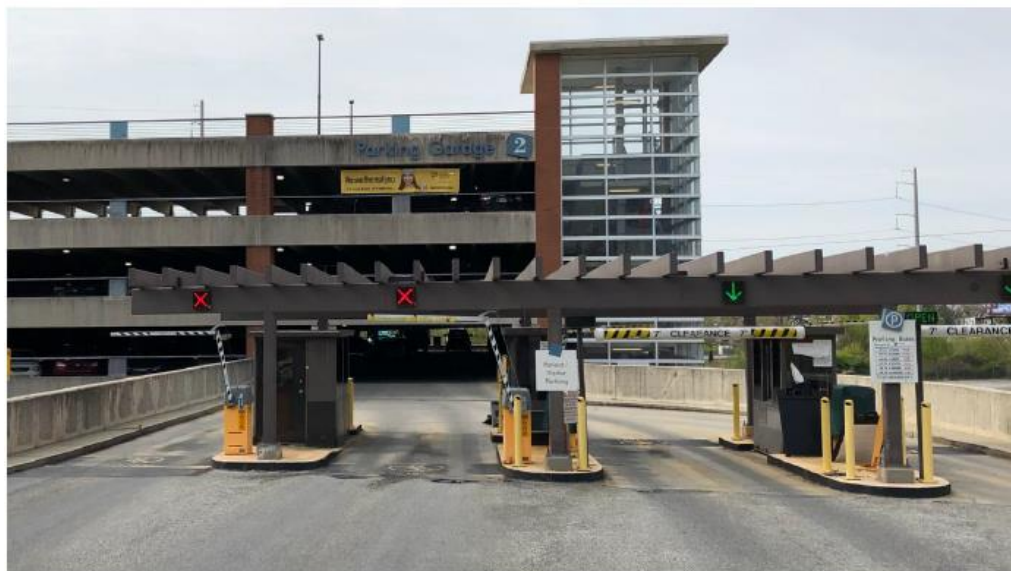
If you are getting dropped off: Follow the **yellow route** in the below picture, turn left and drive down the driveway that will take you into the “Cancer Center Circle”. You will see an entrance on the **right side** with a security desk just inside the door. **DO NOT** go into the Cancer Center itself, which has an entrance way on the left side of the Cancer Center Circle.

If you are driving and parking: Follow the **red route** shown in the below picture. Continue to drive straight and then enter Parking Garage # 2 and find a parking spot.



Our Parking Garage - “Parking Garage # 2”

There are 2 parking garages at Crozer Chester Medical Center – Parking Garage # 2 and the Upland Avenue/ER Garage. If you are attending one of our courses, **DO NOT** park in the Upland Avenue/ER Garage. Instead, park in Parking Garage #2. See a picture of the entrance to Parking Garage #2 below.



Access to the Robert Reeder Simulation & Education Center

Once you have parked in Parking Garage #2, find the elevators. Take the elevator down to the 1st floor. When exiting the elevator, turn RIGHT and follow the ramp. At the top of this ramp, turn RIGHT.



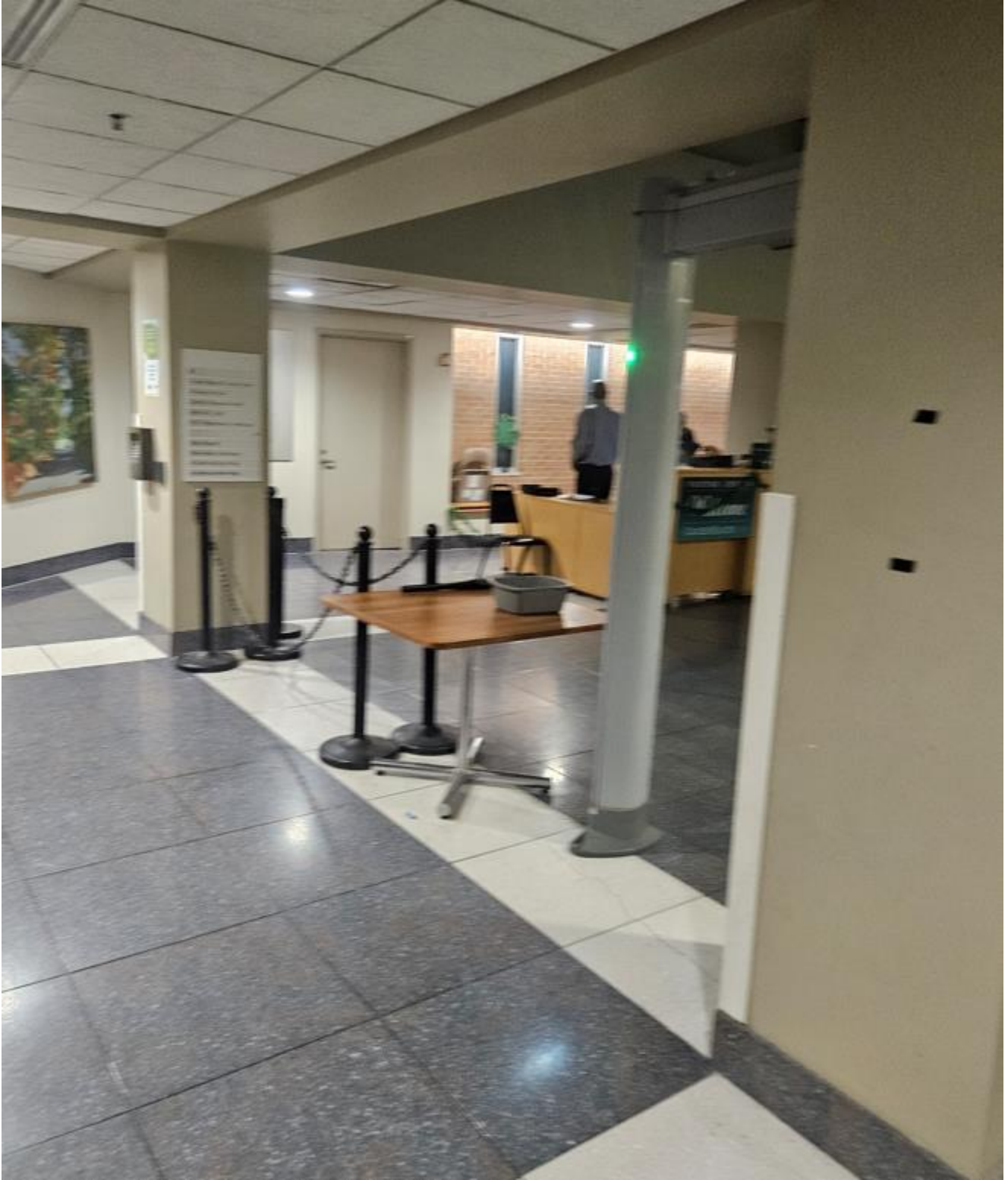
Follow tiled walkway and go through the double doors. You will then reach the POB Security Desk (pictured below).



At the Security Desk, make a hard LEFT and walk down the hallway with large glass windows (pictured below).



At the far end of the hallway pictured above, you will see another Security desk as well as metal detectors.



If you do not have a Crozer Health Employee or Student badge, you will need walk up to the table/metal detector (pictured below) and follow the directions given to you by the Security Guards. Sometimes there is a line here, so make sure to give yourself some extra time to get to your scheduled class.

EMT Students (only) – you will have to go through the metal detectors and talk with Security until you receive your Crozer EMT student badge. Once you receive your Crozer EMT student badge, you can follow the employees and walk around the security desk on the far side – just make sure to show them your badge.



Once you have passed through the metal detectors, you will walk up to the Security desk (pictured below).

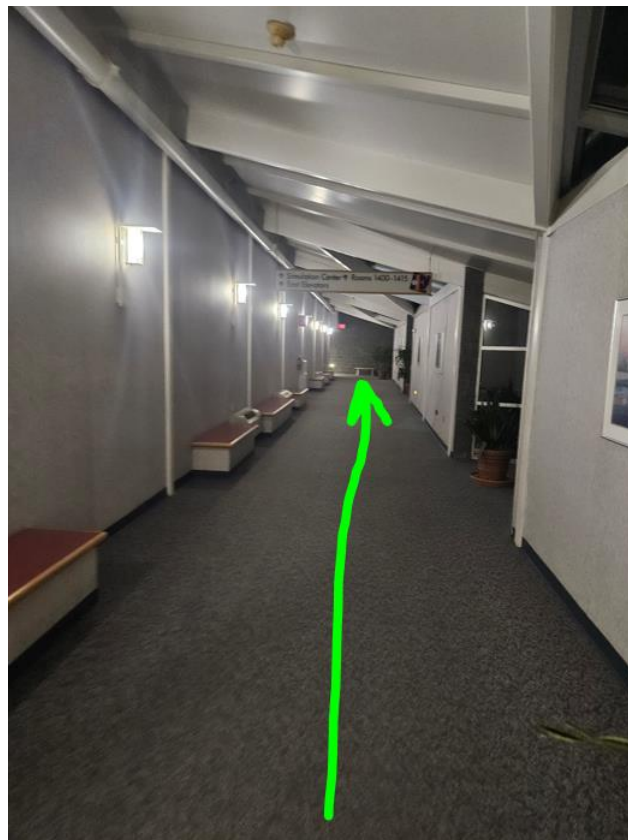


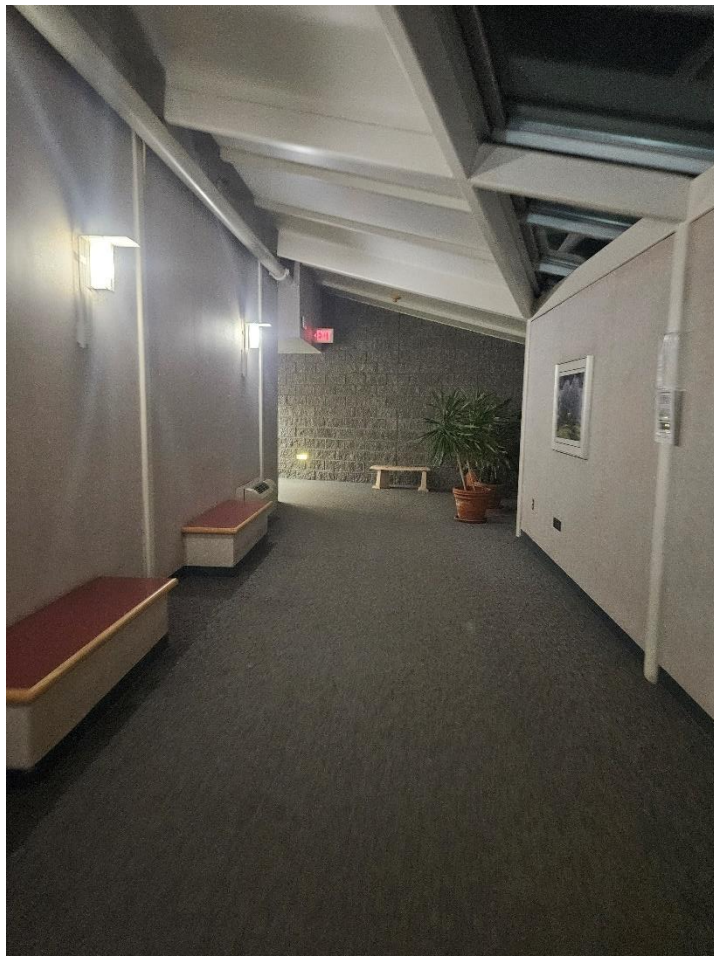
At this Security desk, you will need show them a photo ID and tell them that you are taking a class in the Simulation Center (located on the 1st Floor, East Wing, adjacent to the Inpatient Geriatric Psychiatry Unit). Security will give you a sticker to wear – this is a visitor’s pass – you will need to return this to them when leaving the building.

Once you are finished at the Security desk, you will turn Right and a few feet until you are here (see picture below). DO NOT turn left. Instead, follow the **green arrow** in the picture below and walk straight down the hallway.



Walk forward down the hallway (pictured in the next few pictures below). When you reach the concrete bench, turn Left.

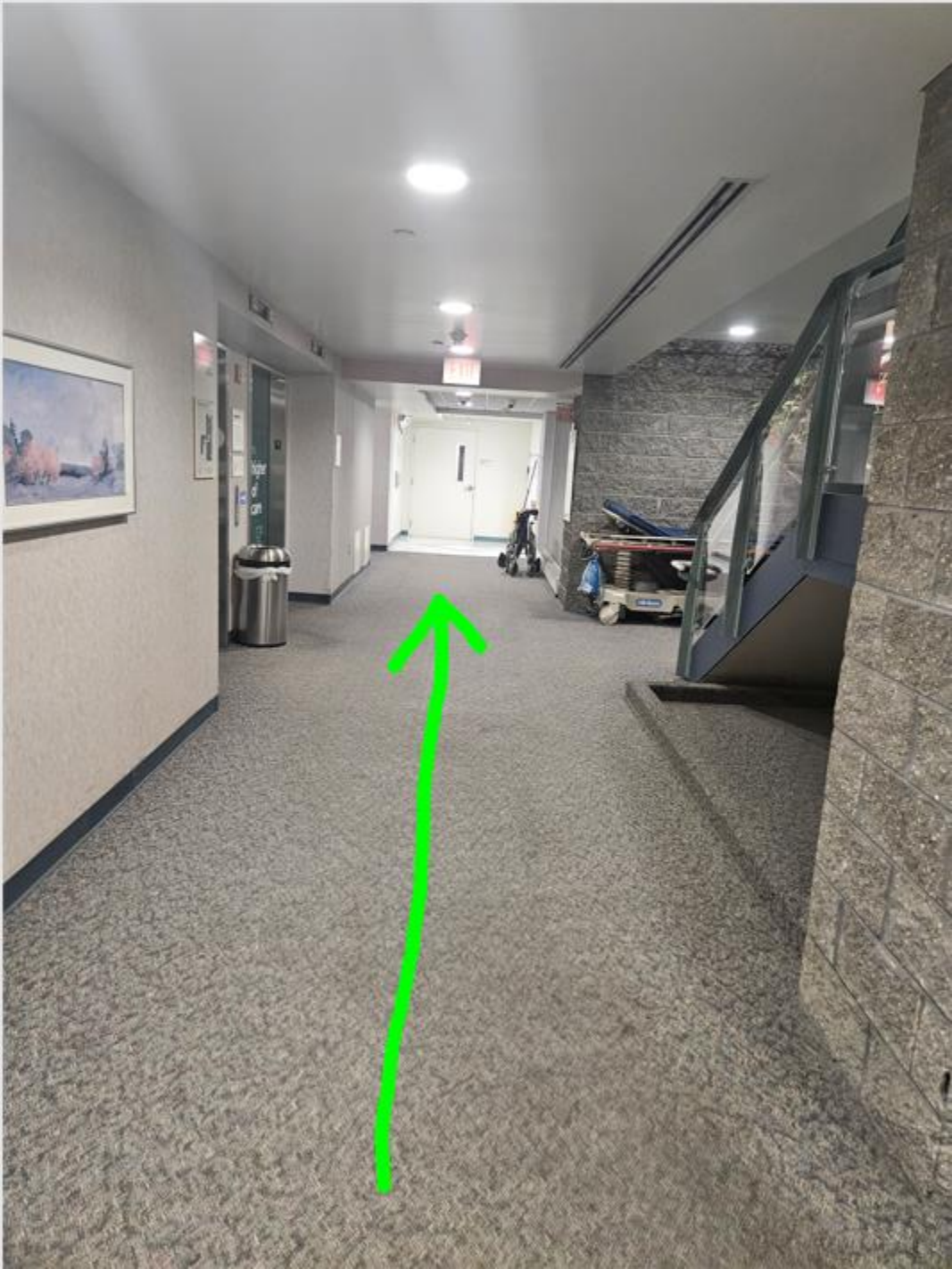




After turning left at the concrete bench, continue to walk straight down the end of the hallway pictured below, then turn Right.



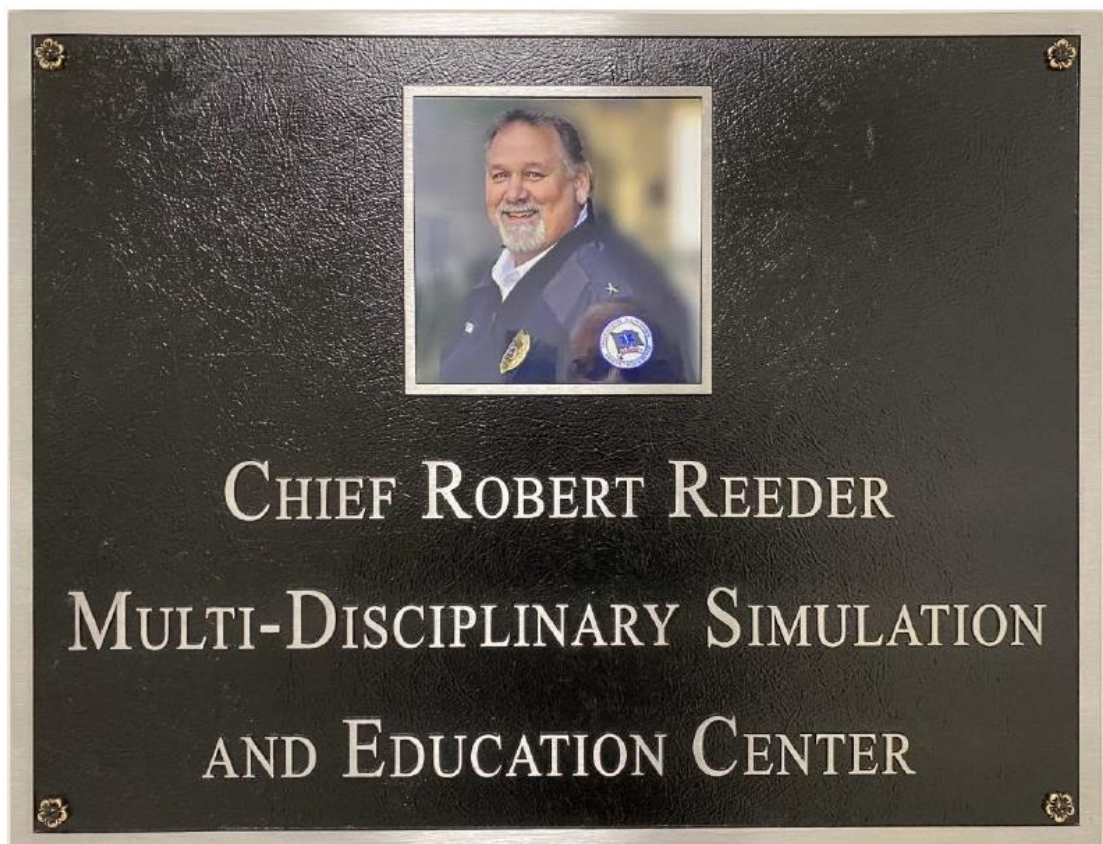
When you turn right at the end of the hallway in the previous picture, this will be your view (see the next picture below). Walk past the elevators and the stairs towards where the carpeted flooring turns into tile flooring.



When up you reach the tile flooring turn Right. DO NOT try to knock on or get into the door in the next picture below.



You will now be looking at the entrance to the Chief Robert Reeder Simulation Center. Please take a moment to look at the plaque dedicated to Chief Reeder on the left wall. Chief Reeder was an excellent leader, mentor, paramedic, and educator!



Walk through the double doors, down the hallway until you get to the Main Classroom of the Simulation Center. When classes are happening, there are usually instructors ready to sign-in students. If you need other assistance, please ask for Stacey Wigent or Nick Scull – their offices are located in the back hallway of the Simulation Center. There are also Breakout/Skills rooms located in the back hallway and a Computer Lab located just inside of the Main Classroom to the left. Ask anyone for assistance – they are all happy to help!



Public Transportation Information

We are accessible by SEPTA Bus routes 113, 114, and 117. These bus routes can/will drop you off on campus.

Airport Information

The closest airport to Crozer Chester Medical Center is Philadelphia International Airport (PHL).

[Please CLICK HERE for additional Airport information](#)

Local Hotel Information

(Note: Crozer Health does not endorse nor recommend any specific hotel for your intended stay.)

[Best Western Plus Philadelphia Airport South at Widener University](#)

Address: 1450 Providence Avenue Chester, Pennsylvania 19013

Phone: (610) 756-7449

[Microtel Inn & Suites by Wyndham Philadelphia Airport Ridley](#)

Address: 155 South Stewart Avenue, Ridley Park, Pennsylvania 19078

Phone: (610) 756-7449

[La Quinta Inn & Suites by Wyndham Philadelphia Airport](#)

Address: 53 Industrial Highway, Essington, Pennsylvania 19029

Phone: (610) 857-7830